

**ADDENDUM NO. 5**

**Alamance County MSWLF – Scale House and Facility Improvements**

**ALAMANCE COUNTY, NORTH CAROLINA**

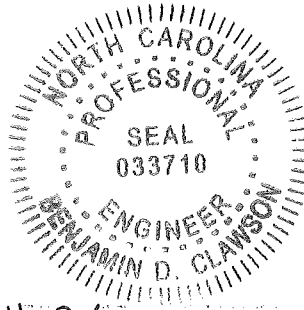
**May 11, 2026**


**Plan Sheets**

Please incorporate the updated E-2 sheet into your overall plans. This will replace the previous sheet E-2.

Please incorporate the new sheet M-1 into your overall plans.

All other conditions remain the same.



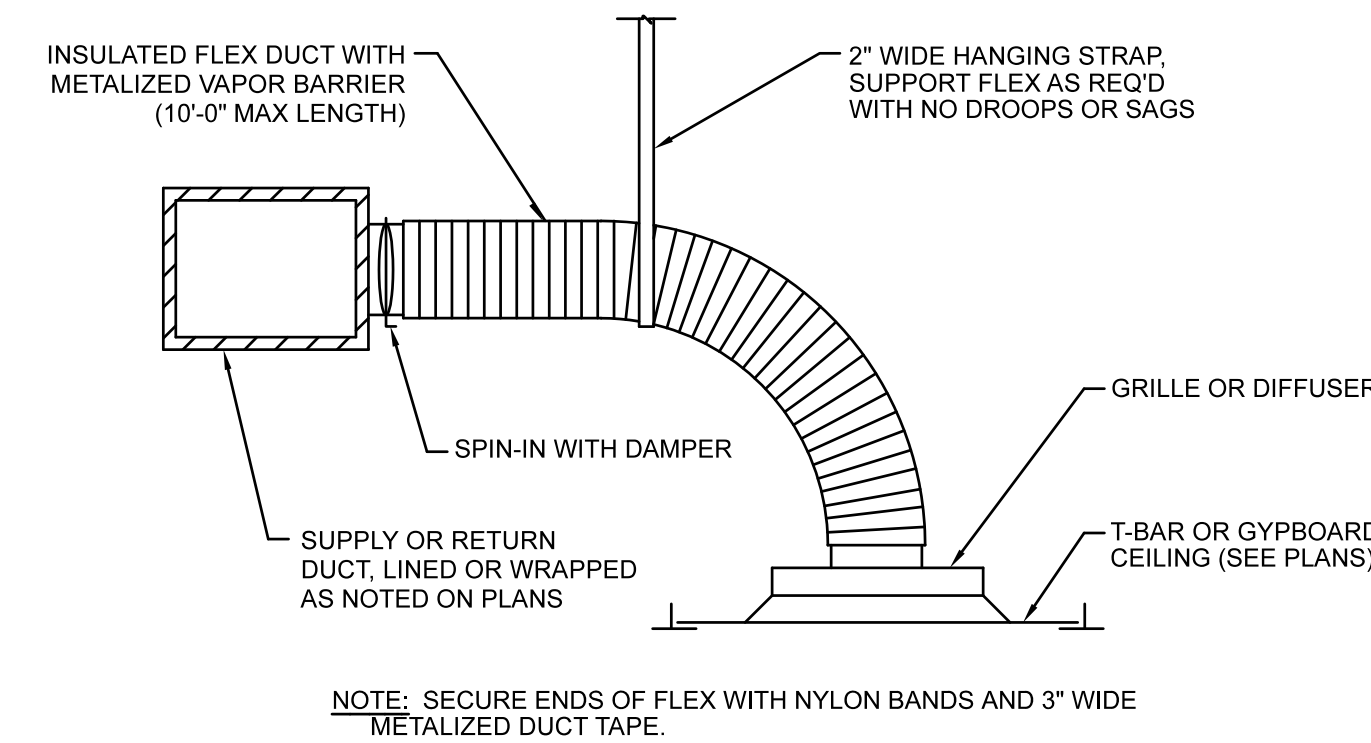
By:  5-11-26

Benjamin Clawson, P.E.  
Municipal Engineering Inc.  
License No. C-0281  
68 Shipwash Drive, Garner, NC 27529



**MECHANICAL NOTES:**

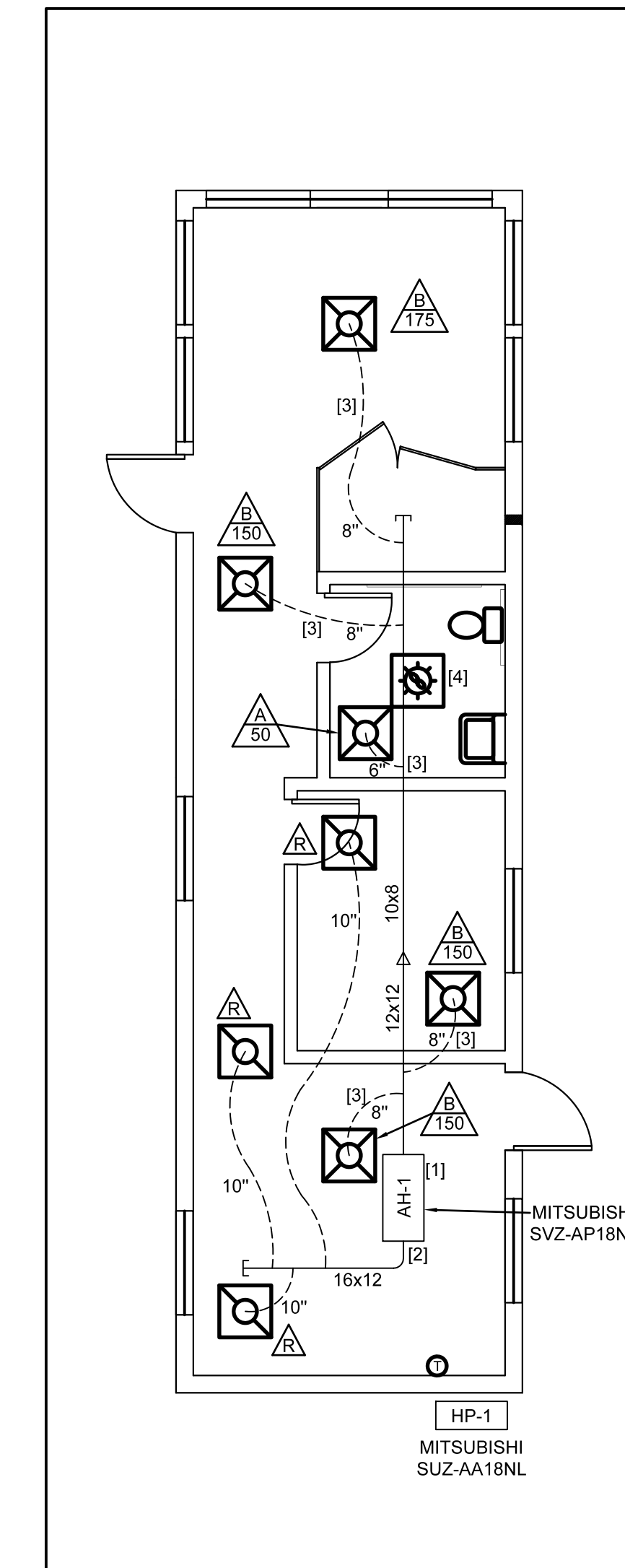
- MECHANICAL PLANS ARE INTENDED TO PROVIDE INFORMATION FOR INSTALLATION OF A COMPLETE OPERATING MECHANICAL SYSTEM. PROVIDE ALL ESSENTIAL LABOR, MATERIALS & DEVICES REQUIRED TO PRODUCE A QUALITY END PRODUCT.
- CONTRACTOR SHALL PROVIDE REQUIRED PLANNING, COORDINATING & SEQUENCING OF INSTALLATION OF MECHANICAL EQUIPMENT & MATERIALS WITH BUILDING COMPONENTS & OTHER TRADES.
- ALL WORK SHALL COMPLY WITH LOCAL, STATE & NATIONAL CODES. WORKMANSHIP SHALL MEET OR EXCEED INDUSTRY STANDARDS.
- CONTROL WIRING, RELAYS AND INTERLOCKING DEVICES SHALL BE PROVIDED BY MECHANICAL CONTRACTOR.
- PROVIDE A BALANCING DAMPER FOR EACH SUPPLY GRILLE.
- INSTALL EQUIPMENT TO FACILITATE SERVICING, MAINTENANCE & REPAIR IN ACCORDANCE WITH MFGS. WRITTEN INSTALLATION INSTRUCTIONS AS WELL AS SPECIFIC INSTRUCTIONS ON PLANS.
- CONTRACTOR SHALL BALANCE AIR SYSTEM TO QUANTITIES INDICATED ON PLANS. A BALANCING REPORT FROM THE CONTRACTOR SHALL BE FURNISHED TO THE CODE ENFORCEMENT OFFICIAL AND A COPY INCLUDED IN THE OPERATING AND MAINTENANCE MANUAL.
- ALL EQUIPMENT & SYSTEMS SHALL BE WASHED, MECHANICAL AREAS CLEANED AND PAINTED SURFACES TOUCHED UP TO MATCH FACTORY APPLIED FINISHES.
- CONTRACTOR SHALL INSTALL A NEW SET OF PLEATED FILTERS BEFORE TURNING BUILDING OVER TO OWNER.
- GUARANTEE ALL EQUIPMENT, MATERIALS AND INSTALLATION FREE OF DEFECTS FOR A PERIOD OF 1 YEAR AFTER DATE OF ACCEPTANCE. EXTENDED GUARANTEES ON EQUIPMENT SHALL BE AS PUBLISHED ON MFGS. EXTENDED WARRANTIES.
- PROVIDE AN OPERATING AND MAINTENANCE MANUAL FOR ALL HVAC SYSTEMS AND EQUIPMENT TO THE BUILDING OWNER. CLEARLY IDENTIFY ROUTINE MAINTENANCE ACTIONS AND INCLUDE NAMES AND ADDRESSES OF QUALIFIED SERVICE AGENCIES.
- CONDENSATE TRAPS FOR ALL AC UNITS SHALL BE SIZED AS RECOMMENDED BY UNIT MFG. CONDENSATE PIPING AND TRAPS SHALL BE SCHEDULE 40 PVC ROUTED TO DRY WELL OR FLOOR DRAIN. INSULATE INTERIOR PIPING WITH 1/2 INCH THICK UNICELLULAR INSULATION AS REQUIRED.
- REFRIGERANT PIPING SHALL BE TYPE ACR COPPER WITH SILVER SOLDERED JOINTS. SIZE, INSULATE AND INSTALL PER EQUIPMENT MFGS. INSTALLATION INSTRUCTIONS.
- POWER WIRING, DISCONNECTS & STARTERS NOT FURNISHED WITH HVAC EQUIPMENT AND FINAL CONNECTIONS SHALL BE BY ELECTRICAL CONTRACTOR.
- PROVIDE AUXILIARY DRAIN PANS UNDER ALL UNITS INSTALLED OVER AN OCCUPIED SPACE. PANS SHALL HAVE MIN. DEPTH OF 1-1/2" AND SHALL BE NOT LESS THAN 3" LARGER THAN UNIT IN WIDTH AND LENGTH AND SHALL BE CONSTRUCTED OF NOT LESS THAN 24 GA GALVANIZED SHEET STEEL. A SEPARATE DRAIN LINE SHALL BE EXTENDED FROM THIS PAN TERMINATING AT A CONSPICUOUS POINT.
- PROVIDE CONCRETE PAD FOR GROUND MOUNTED EQUIPMENT. PAD SHALL BE MIN. 4" THICK AND 4" LARGER THAN EQUIPMENT ON ALL SIDES.
- IT IS THE RESPONSIBILITY OF THE CONTRACTOR TO VERIFY ALL CLEARANCES BEFORE PURCHASING ANY EQUIPMENT OR FABRICATING ANY DUCTS. DO NOT SCALE FROM THE MECHANICAL PLANS. USE THE FLOOR PLANS OR FIELD MEASUREMENTS FOR DIMENSIONS.
- WHEREVER OBSTRUCTIONS REQUIRE A CHANGE IN DUCT SHAPE MAINTAIN THE EQUIVALENT AREAS.
- FABRICATE AND INSTALL DUCT PER SMACNA STANDARDS FOR 2 INCH WC WITH GALVANIZED METAL (26 GAUGE MINIMUM). ALL RADIUS ELBOWS & TEES SHALL HAVE CENTERLINE RADIUS OF 1.5 X DUCT WIDTH. ALL SQUARE ELBOWS & TEES SHALL HAVE TURNING VANES.
- ROUND RUN OUTS SHALL HAVE SEAL TYPE SPIN-INS WITH DAMPERS, RECTANGULAR BRANCH DUCTS SHALL HAVE 45 DEGREE TAPS WITH AIR EXTRACTORS AND ALL TEES SHALL HAVE SPLITTER DAMPERS.
- ALL FLEX DUCT SHALL HAVE METALIZED VAPOR BARRIER EQUAL TO THERMAFLEX M-KE. FLEX DUCT SHALL NOT EXCEED 10 FEET IN LENGTH. PROVIDE MINIMUM INSULATION R-VALUE OF 5.0 FOR ALL FLEX.
- SEALING DUCT SYSTEMS
  - IN A FLEXIBLE DUCT SYSTEM, ALL CONNECTIONS MUST BE MECHANICALLY FASTENED AND SEALED. USE DUCT MASTIC OR TAPE LISTED AND LABELED IN ACCORDANCE WITH UL181A OR UL181B.
  - IN A METAL DUCT SYSTEM, ALL TRANSVERSE AND LONGITUDINAL SEAMS MUST BE SEALED WITH DUCT MASTIC OR TAPE LISTED AND LABELED IN ACCORDANCE WITH UL181A OR UL181B.
  - USE CONVENTIONAL DUCT TAPE TO SEAL THE JOINTS ON ACCESS DOORS.
  - SEAL & INSULATE ALL GRILLE & DIFFUSER NECKS TO MAINTAIN VAPOR BARRIER AND ELIMINATE CONDENSATION.
- RIGID ROUND AND RECTANGULAR DUCT SHALL BE EXTERNALLY INSULATED WITH 2 INCH THICK 3/4 LB. DENSITY FIBERGLASS BLANKET WITH FSK VAPOR BARRIER.



**B** ROUND NECK AIR DISTRIBUTION  
M-1 SCALE: NONE

**KEYED NOTES**

- HANG AIR HANDLER FROM OVERHEAD.
- PROVIDE SMOKE DETECTOR IN RA DUCT.
- FLEX DUCT SIZED TO MATCH GRILLE NECK. SEE AIR DISTRIBUTION SCHEDULE. PROVIDE BALANCING DAMPER AT EACH SPIN OUT FROM MAIN DUCT TO SUPPLY GRILLE. SEE DETAIL B ON SHEET M-1. TYPICAL ALL FLEX DUCTS CONNECTIONS
- COORDINATE WITH GC TO PROVIDE ROOF VENT FOR TOILET EXHAUST FAN, USE CURBING TO MATCH ROOF.



**A** HVAC PLAN  
M-1 SCALE: 3/16"=1'-0"

**AIR DISTRIBUTION SCHEDULE**

TAG	CFM RANGE	TYPE	FACE	NECK	PATTERN	MAT'L	FINISH	MFG	MODEL	NOTES
A	110	T-BAR SUPPLY	24X24	6"	4-WAY	STEEL	WHITE	H&C	HVS	-
B	250	T-BAR SUPPLY	24X24	8"	4-WAY	STEEL	WHITE	H&C	HVS	-
R	275	T-BAR RETURN	24X24	10"	PERF.	STEEL	WHITE	H&C	PDR	-

**EXHAUST FAN SCHEDULE**

TAG	TYPE	CFM	SP	RPM	MTR HP	VOLT/PH	WATT	MAKE	MODEL	SONES	WEIGHT	NOTES
EF-1	CEILING	110	0.125	-	-	120/1	22.6	GREENHECK	SP-LP0511L	2.5	-	1,2,3

- NOTES:**
- PROVIDE 6" DUCT TO ROOF VENT.
  - WITH LED LIGHT.
  - FAN BY GREENHECK OR EQUAL.

**HEAT PUMP - AIR HANDLER SCHEDULE**

TAG	ARI COOLING		ARI HEATING		SUPPLY FAN			OUTSIDE AIR	MAKE	MODEL	AUX KW @208V	VOLT /PH	FLA	MCA	OCPD	WEIGHT	NOTES
	MBTU/H	SEN	MBTU/H	CFM	EXT SP	W	CFM										
AH-1	18.0	14.9	23.8	675	0.8	123	-	MITSUBISHI	SVZ-AP18NL	-	208/1	-	3	-	97	1	

- NOTES:**
- PROVIDE PROGRAMMABLE SEVEN-DAY T-STAT WITH ENERGY SAVER FUNCTIONS AND SETBACK FUNCTION.

**HEAT PUMP - CONDENSER SCHEDULE**

TAG	MAKE	MODEL	EFFICIENCY		VOLT /PH	FLA	MCA	OCPD	COMP	WEIGHT	AIR HANDLER	NOTES
			COOLING	HEATING								
HP-1	MITSUBISHI	SUZ-AA18NL	16.20 SEER	3.8 COP	208/240/1	-	25	30	-	115	SVZ-AP18NL	-

**Engineering Company, P.A.**  
 P.O. BOX 349 BODINE, N.C. 28607  
 (866) 266-1767  
**Municipal Services**  
 P.O. BOX 97 GARNER, N.C. 27529  
 (919) 772-5993  
 LICENSE NUMBER: C-0281

**ALAMANCE LANFILL SCALES,  
 SCALE HOUSE & RAOD RE-ALIGNMENT  
 ALAMANCE COUNTY  
 GRAHAM, NORTH CAROLINA**

DATE	BY	REV	DESCRIPTION
			SCALE HOUSE HVAC

SCALE: 3/16"=1'-0"  
 DATE: 6 MAY 2026  
 DRWN BY: -  
 CHKD BY: -  
 PROJECT NUMBER: **G24045**  
 DRAWING NO: **M-1** SHEET NO: **SHNO**

**J.C. Uzzell, Jr., Ph.D.**  
 PROFESSIONAL ENGINEER  
 135 Lake Wackena Road  
 Goldsboro, NC 27534  
 Phone (919) 922-9401  
**Matt J Uzzell**  
 ENGINEER IN TRAINING